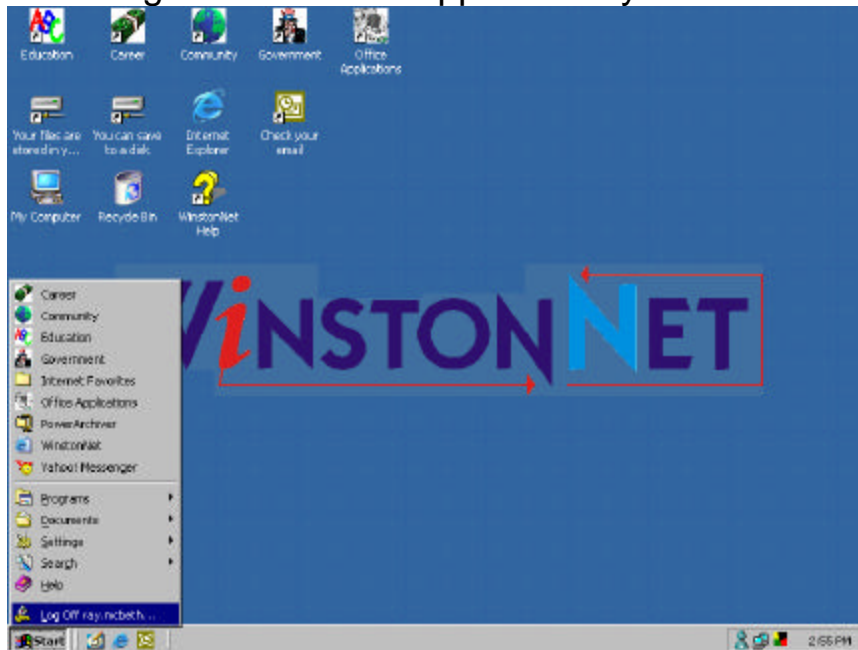


1.5 Leaving WinstonNet

Point at the Start Menu with the mouse

Press (click) the left mouse button once

The following screen should appear with your user name after Log Out



Point at the *Log Off Yourfirstname.Yourlastname* option using the mouse

Press (click) the left mouse button once

From now on this will be referred to as point and click

This should take you to a Confirm Log Off screen

Point and click on the *Yes* option (or press the *Enter* key)

The Log In / Shutdown screen should appear (see page 3)

Point and click at the *Shutdown* option

This should take you to a Shutdown VTOS-32 screen

Point and click at the *OK* option

The system should shut down

WARNING!! DO NOT SHUTDOWN THE SYSTEM USING THE POWER BUTTON!! Always shutdown the system using the menus

NOW YOU TRY IT

(see pages 1.3 & 1.4 if you need assistance)

(Stop when you get to the WinstonNet screen)